



SAMRUDDHI *Gardens*

WELL LANDSCAPED PREMIUM 2, 3 & 4BHK APARTMENTS - TADEPALLI

Promoters :



SAMRUDDHI Builders

Samruddhi Gardens, J - Block,
Ground Floor, Beside Our Place Restaurant,
CSR Kalyanamadapam Road, Tadepalli, GUNTUR - 522 501

✉ samruddhigardens24@gmail.com

🌐 www.samruddhiprojects.com

☎ **+91 9124 517 999, +91 9124 518 999**

Architects :



G.V. Krishna Rao GVK ASSOCIATES

Architects & Interior Designers
4th Lane, Lakshmipuram, Guntur.
Cell : 94400 21809

Structural Engineers

V.A. REDDY B.E. (MS) Structural
0863-2240983 Cell : 98480 16447

Brochure Design By :
Prabhu Graphics : 98480 52562, 79814 29298

... a gated community project from





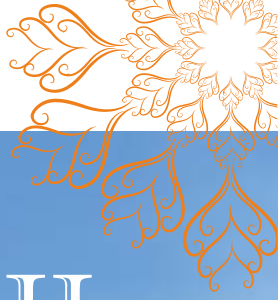
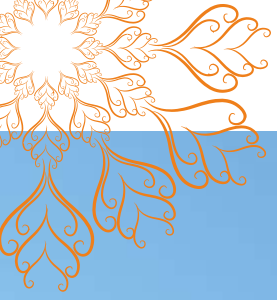
Welcome to
The GLORIOUS Landmark of **BEST LIVING...!**



Ariel View

It's your place,
suited to Your Lifestyle.





SAMRUDDHI Builders & Developers

one of the Most Experienced leading builders in TADEPALLI,
we do not merely construct houses, we design homes
that complement the way you lead your life. Our homes are
an extension of your personality and lifestyle. More open spaces
built with the exclusive features and amenities, you will find your
ideal home at SAMRUDDHI Gardens, that reflects who you are
and what you aspire to be in life



SAMRUDDHI
Gardens



YOUR **DREAM** HOME.
AT A PRIME LOCATION.
FOR A **PRIME LIFESTYLE**...!



Welcome to
The GLORIOUS Landmark of
BEST LIVING...!

SAMRUDDHI Gardens is an unique and aesthetically crafted 300 Flats with Stilt + 5 floors. An abode of spacious 2, 3 & 4BHK Flats, well ventilated and thoughtfully distributed spaces to let you live just the way you always dreamt of. It's where a perfect equilibrium strikes between you and nature. Here you will find landscape design that is serene, a Club house with world class amenities like Swimming pool, Open air Gym, Tennis Court, Multipurpose area, Open Terrace, Children's play area, Seating plaza and meticulously laid infrastructure to provide for Best Living.



Community Features

- ✦ Entire project is 100% Vaasthu
- ✦ Pollution free atmosphere
- ✦ Splendid Main Entrance
- ✦ CLUBHOUSE spread 23,000 Sft
 - ✦ Children's Play Area
 - ✦ Excellent Landscaping
 - ✦ Underground Drainage
- ✦ Cabling system for Power,TV & Net
- ✦ Modern street lighting
- ✦ Rain Water Harvesting
- ✦ Power Back-up Generator
- ✦ 24 Hours security
- ✦ Entry and exit gates with guard
- ✦ Compound wall around the project
- ✦ 24 hours CCTV Surveillance
- ✦ Sewerage Treatment Plant
- ✦ Multi-purpose Party Hall
 - ✦ Designer Lawns
 - ✦ Avenue plantation
 - ✦ Seating spaces
 - ✦ Excellent Landscaping
 - ✦ Indoor games room
- ✦ Well designed Swimming pool
- ✦ Indoor A/C Gymnasium
- ✦ Tennis Court - Snookers
- ✦ Provision for Super market
- ✦ Basketball Court
- ✦ A/c Guest rooms in Club House
 - ✦ Walking track
 - ✦ Yoga - Meditation area

 **SAMRUDDHI**
Gardens



Total Layout View



Seating Plaza



Tennis Court



Night View



Club House



YOGA

GYM

JOGGING TRACK

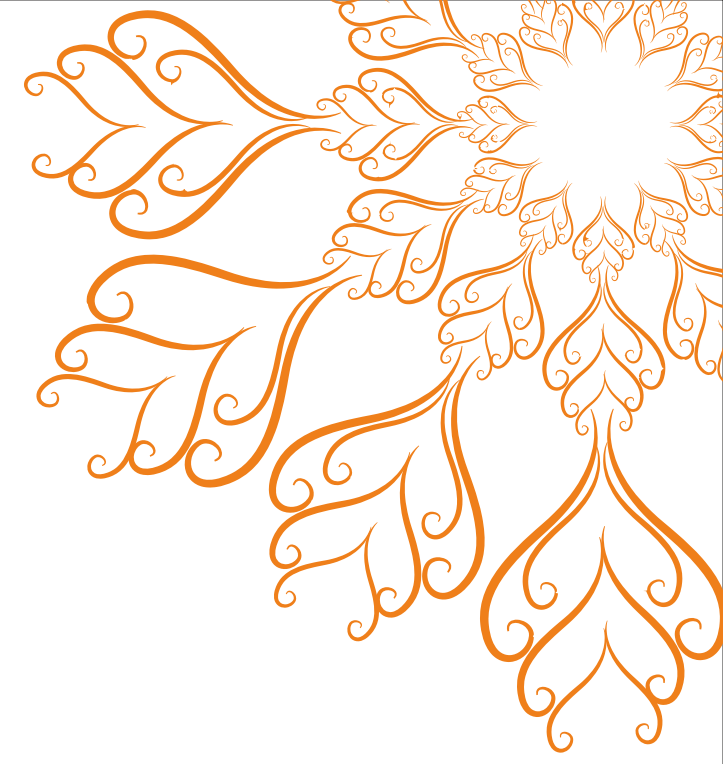
MULTI PURPOSE HALL

CARROMS

SNOOKERS

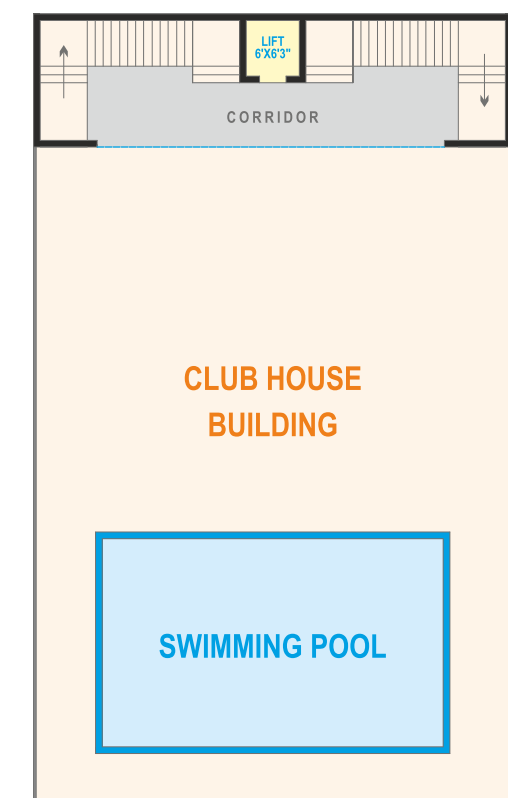
Isometric View





SAMRUDDHI Gardens

ROAD



Typical Floor Plan

EXISTING 40' WIDE ROAD





Isometric Views

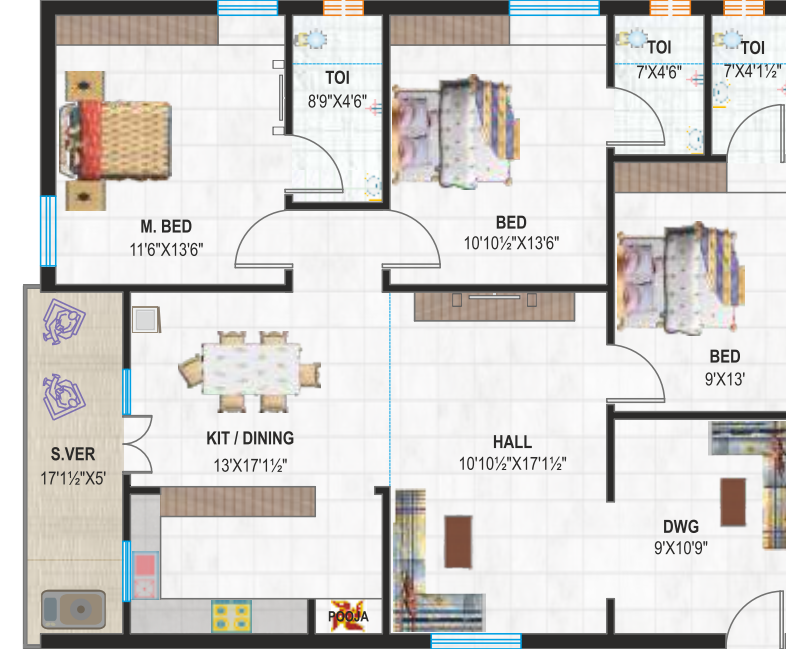
Isometric Views



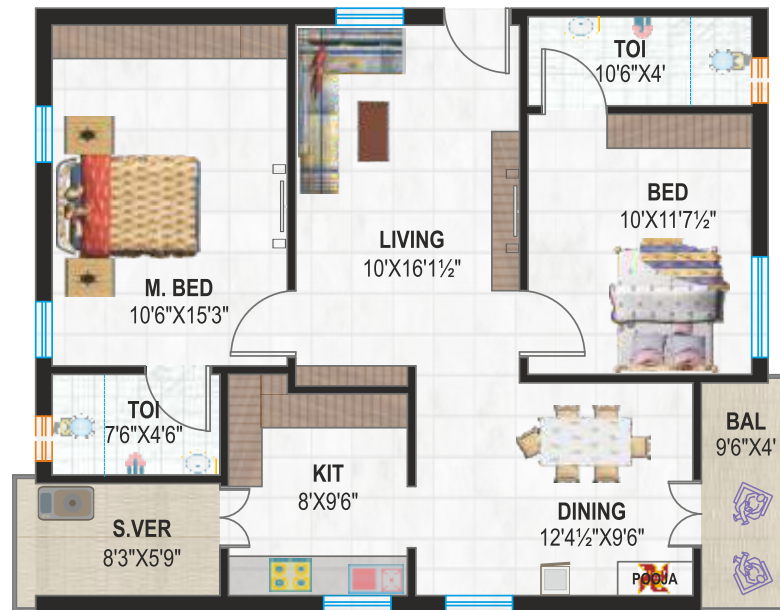
2 BHK EAST - 1150 Sft.



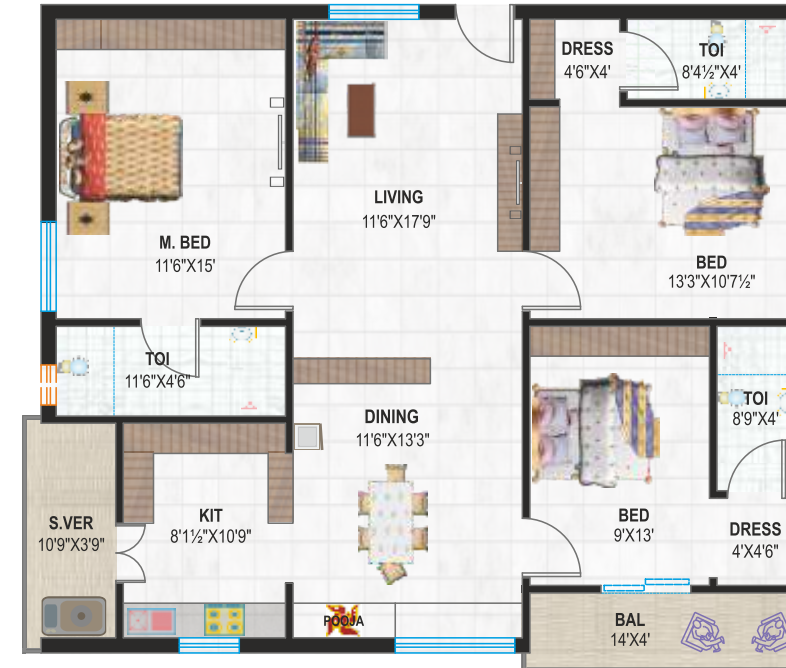
3 BHK EAST - 1626 Sft.



2 BHK WEST - 1150 Sft.



3 BHK WEST - 1626 Sft.



Specifications

- SUPER STRUCTURE** : RCC framed structure with seismic compliances as per IS Code.
First class Brick work in Cement mortar, External walls - 9" and Internal walls - 4.5"
- DOORS & WINDOWS** : * Main door - Polished teak wood frame and teak wood door shutter with Brass hardware.
* Internal door - Teak wood frames with designer shutters.
* Toilets - Hard wood frame with water proof shutters. Balcony - UPVC sliding doors.
* UPVC With safety grills, glass, mosquito mesh and sliding type.
- FLOORING** : * Living / Dining / Bed rooms and Kitchen with 2' X 2' size Vitrified Tiles of CERA / VETIRO or equivalent.
* Toilets/Utility/Balcony - Anti skid ceramic Tiles.
* Common areas - Vitrified Tiles of CERA or VETIRO.
* Stair cases - Granite
* Basement - Cement Concrete Power Trowelled with smooth finish / parking Ties.
- WALL DADO** : * Kitchen - 2' height Tiles Dado.
* Toilet - Ceramic Tiles Cladding up to 7 feet height.
* Utility - Ceramic Tiles Up to 4 feet height.
- KITCHEN / UTILITY** : * Provision for modular kitchen with black granite Counter with single bowl SS sink.
* Plumbing - Provision for RO water point.
* Electrical - Provision for Refrigerator, Oven, Steam Cooker, Microwave & washing machine.
- TOILETS** : * Fittings - Jaquar / Cera or equivalent.
* Sanitary fixtures - EWC of Cera / Jaquar or equivalent.
* Wash basin - White Colour Wash basins of Cera / Jaquar or equivalent.
* Provision for Geysers in all toilets. Hot & cold single lever mixer with shower.
- PAINT & FINISHING** : * External Finish - Walls with weather shield painting with texture / smooth finish.
* Internal Finish - Wall care putty and double coating Painting with smooth finish.
* Steel work - Synthetic enamel paint – Dulux / Asian or equivalent.
* False ceiling - Design in main hall and plain in bed rooms (only for fifth floor).
- WATER / DRAINAGE** : * Sewerages - PVC Water supply with Sudhakar pipes. STP will be provided.
* External & Internal - CPVC / PVC pipes of Ashirvad or Sudhakar pipes.
* Rainwater harvesting facility.
- ELECTRICAL** : * Lifts - 6 Passenger Capacity of Johnson / KONE or equivalent.
* Modular Switches - Anchor / Legrand or equivalent.
* One earth leakage circuit breaker (ELCB) in every apartment and miniature circuit board.
* Provision for AC points in all Bedrooms and Hall
* Cable TV / Telephone - Cable TV provision for master Bed room and living room.
* 3 phase power supply for each unit and individual meter boards
* Power back up Generator for Fans & Lights for each flat.
* 100% power for lifts, pumps & lighting in common areas.

NOTE : Registration, Electricity, GST & any other Govt. Charges should be borne by the Flat purchaser. Other than the Specifications mentioned above at extra cost.



Location Proximity

